

Panasonic[®] INSTRUCTION MANUAL

Large Display Unit for Area Sensor SF-IND-2

CMJE-SFIND2 No.0061-54V

Thank you very much for purchasing Panasonic products. Read this Instruction Manual carefully and thoroughly for the correct and optimum use of this product. Kindly keep this manual in a convenient place for quick reference.

⚠ WARNING

This product does not possess control functions needed for accident prevention or safety maintenance.

1 PRODUCT OUTLINE

- This is a large-size display unit for use with area sensors and safety light curtain.
- Since it can be mounted on the top of an area sensor, it can also be added to an existing installation.

2 SPECIFICATIONS

Designation	Large display unit for area sensor
Model No.	SF-IND-2
Applicable sensors (Note 1)	Each series of area sensor and safety light curtain
Power supply	24V DC±15%
Current consumption	12mA or less
Indicators	Orange LED (8 Nos. used) [Light up when external contact (Note 2) is ON]
Ambient temperature	-10 to +55°C (No dew condensation or icing allowed) Storage: -25 to +70°C
Ambient humidity	30 to 85% RH, Storage: 30 to 95% RH
Grounding method	Floating
Material	Base: POM, Cover: Polycarbonate Bracket: SPCC (Cold rolled carbon steel)
Cable	0.3mm ² 2-core cabtyre cable, 3m long
Weight	Approx. 70g (including mounting bracket)

Notes: 1) This product cannot be fitted on a mounting bracket having a mounting pitch other than 18mm.

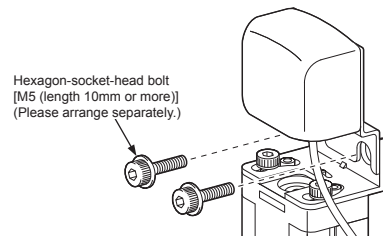
2) Please refer to "5 INPUT CIRCUIT DIAGRAMS" for the external contact.

3 CAUTIONS

- Make sure to carry out the wiring in the power supply off condition.
- Take care that wrong wiring will damage the product.
- Verify that the supply voltage variation is within the rating.
- If power is supplied from a commercial switching regulator, ensure that the frame ground (F.G.) terminal of the power supply is connected to an actual ground.
- Make sure to use an isolation transformer for the DC power supply. If an auto-transformer (single winding transformer) is used, this product or the power supply may get damaged.
- Take care that the sum of the current consumption of **SF-IND-2** and the load connected to the area sensor does not exceed the output rating of the area sensor.
- Extension up to total 100m is possible with 0.3mm², or more, cable.
- Avoid dust, dirt, and steam.
- Take care that the product does not come in direct contact with water, oil, grease, or organic solvents, such as, thinner, etc.

4 MOUNTING

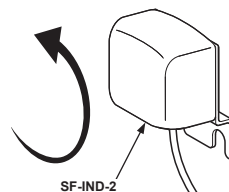
- Tighten together the mounting bracket provided with the area sensor and the mounting bracket of **SF-IND-2** by using hexagonsocket-head bolts [M5 (length 10mm or more)]. The tightening torque should be 3.4N·m. (Please arrange the hexagon-socket-head bolts separately.)



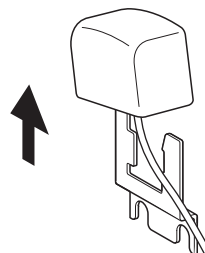
- **SF-IND-2** can be mounted on or dismantled from the mounting bracket by the following method.

Dismantling

1. Slightly tilt **SF-IND-2** in the counterclockwise direction.

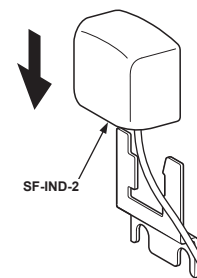


2. In the condition mentioned at 1, remove **SF-IND-2** by lifting it straight up.

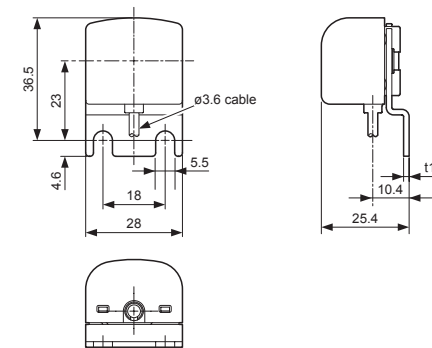


Mounting

1. Insert **SF-IND-2** from above, as shown in the right figure.

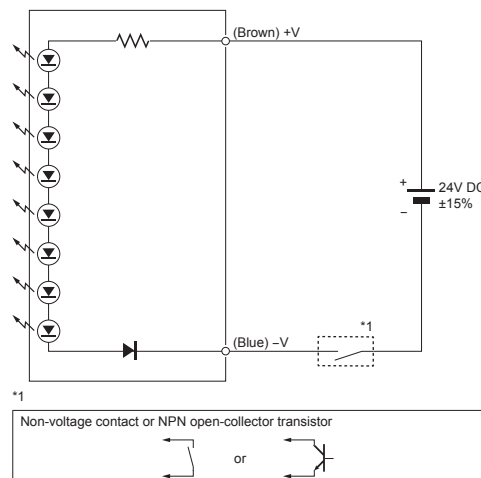


6 DIMENSIONS (Unit: mm)

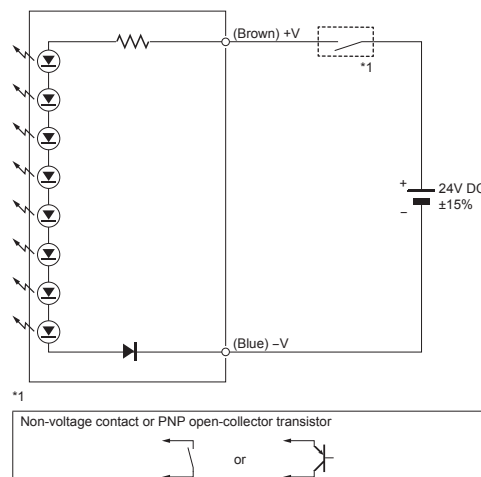


5 INPUT CIRCUIT DIAGRAMS

- In case of connection to NPN output type



- In case of connection to PNP output type



Panasonic Industrial Devices SUNX Co., Ltd.

<http://panasonic.net/id/pidsx/global>

Overseas Sales Division (Head Office)

2431-1 Ushiyama-cho, Kasugai-shi, Aichi, 486-0901, Japan

Phone: +81-568-33-7861 FAX: +81-568-33-8591

For sales network, please visit our website.

© Panasonic Industrial Devices SUNX Co., Ltd. 2017
PRINTED IN JAPAN