

FX2-A3R / FX2-A3R-LED will be discontinued 9/24/2024



www.PanasonicSensors.com

Features

- High-speed response (FX2-A3R)**
 It has a high-speed response time of 15 μ s (in light receiving condition), and is suitable for detecting small objects or objects traveling at high-speed.
 * **FX2-A3R-LED** response time is 50 ms.
- LED sensing (FX2-A3R-LED)**
 LED sensing type, which can detect weak lighting from LED, is also available.
- Multi-rotational adjuster**
 The sensor has a multi-rotational adjuster for fine sensitivity adjustment. Moreover, the idling mechanism of the adjuster makes it free from damage due to over-turning.

Contact Ramco for our other 'high-speed' and 'LED sensing' solutions
 Call (800) 280-6933 or email us at nsales@ramcoi.com

Lineup of high-speed response time:
 15 μ s type (FX2-A3R) and LED sensing type (FX2-A3R-LED)

ORDER GUIDE

Amplifiers

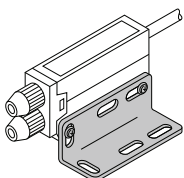
Type	Appearance	Model No.	Response time (In light receiving condition)
For high-speed sensing		FX2-A3R	15 μ s or less
For LED sensing		FX2-A3R-LED	50 ms or less

Fiber head

Type	Shape of fiber head	Sensing range [Min. sensing object in ()]	Description	Fiber cable length	Model No.
Reflective type for high-speed sensing	Coaxial, Lens mountable M4 	4 mm 0.157 in (ϕ 0.05 mm ϕ 0.002 in copper wire)	High-precision positioning thanks to a coaxial reflective type fiber	500 mm 19.685 in	FD-G500

Accessories

- **FX-CT2** (Fiber cutter)
- **MS-FX-1** (Amplifier mounting bracket)



FIBER SENSORS

LASER SENSORS

PHOTOELECTRIC SENSORS

MICRO PHOTOELECTRIC SENSORS

AREA SENSORS

SAFETY LIGHT CURTAINS / SAFETY COMPONENTS

PRESSURE / FLOW SENSORS

INDUCTIVE PROXIMITY SENSORS

PARTICULAR USE SENSORS

SENSOR OPTIONS

SIMPLE WIRE-SAVING UNITS

WIRE-SAVING SYSTEMS

MEASUREMENT SENSORS

STATIC CONTROL DEVICES

LASER MARKERS

PLC

HUMAN MACHINE INTERFACES

ENERGY MANAGEMENT SOLUTIONS

FA COMPONENTS

MACHINE VISION SYSTEMS

UV CURING SYSTEMS

Selection Guide

Fibers

Fiber Amplifiers

Other Products

FX-300

FX-311

FX-301-F7/ FX-301-F

FX-11A

FX2

FX-CH2

FX-CH