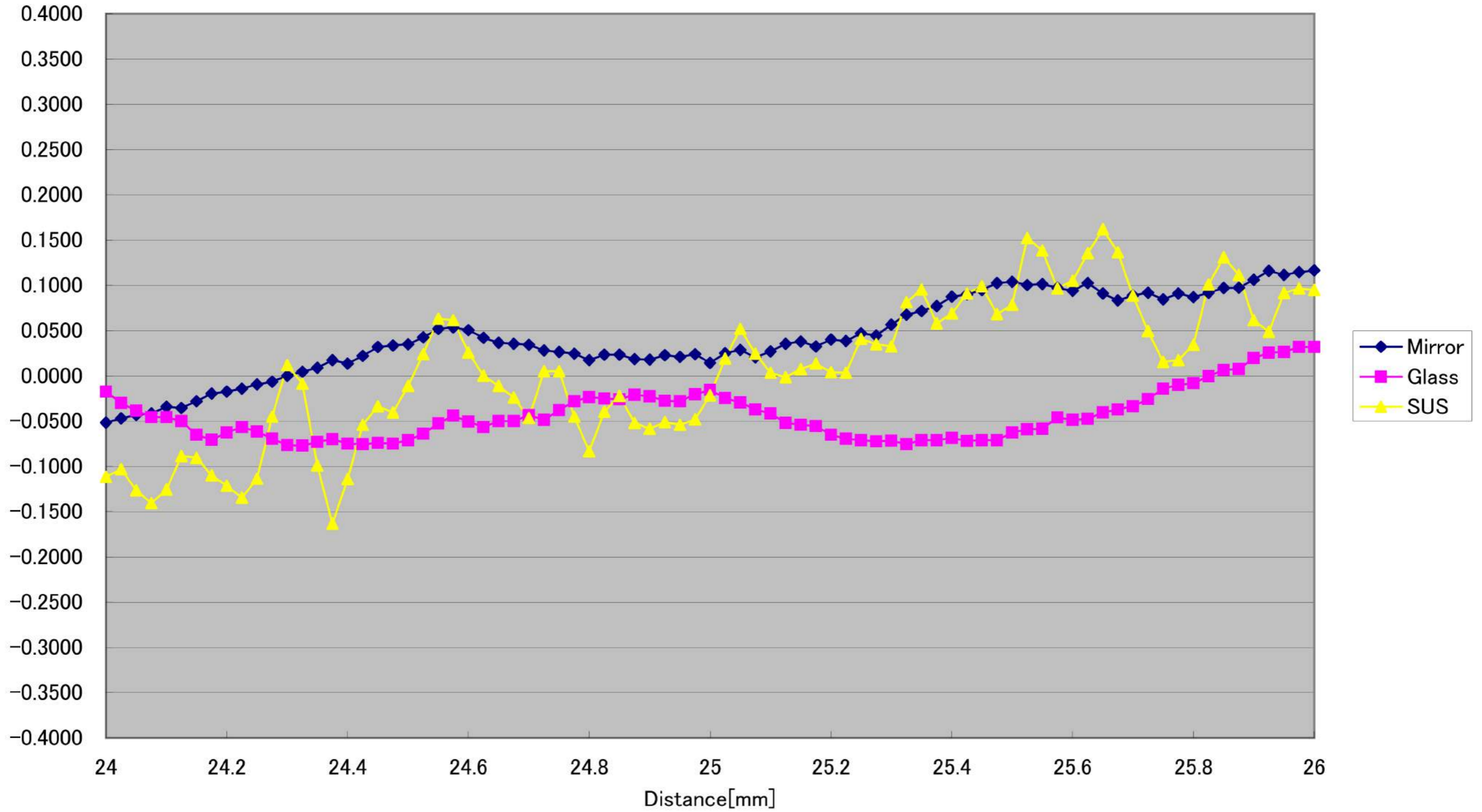
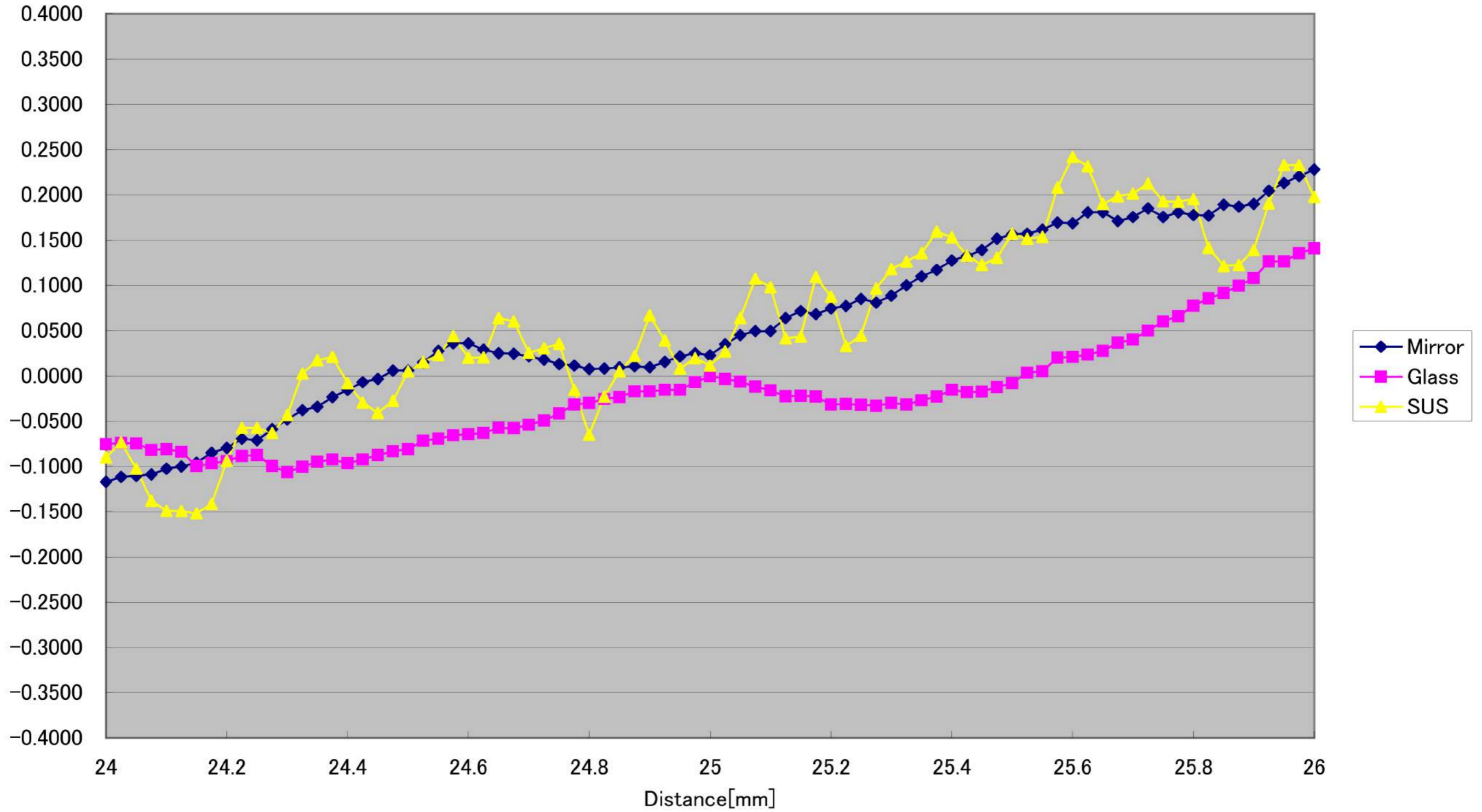


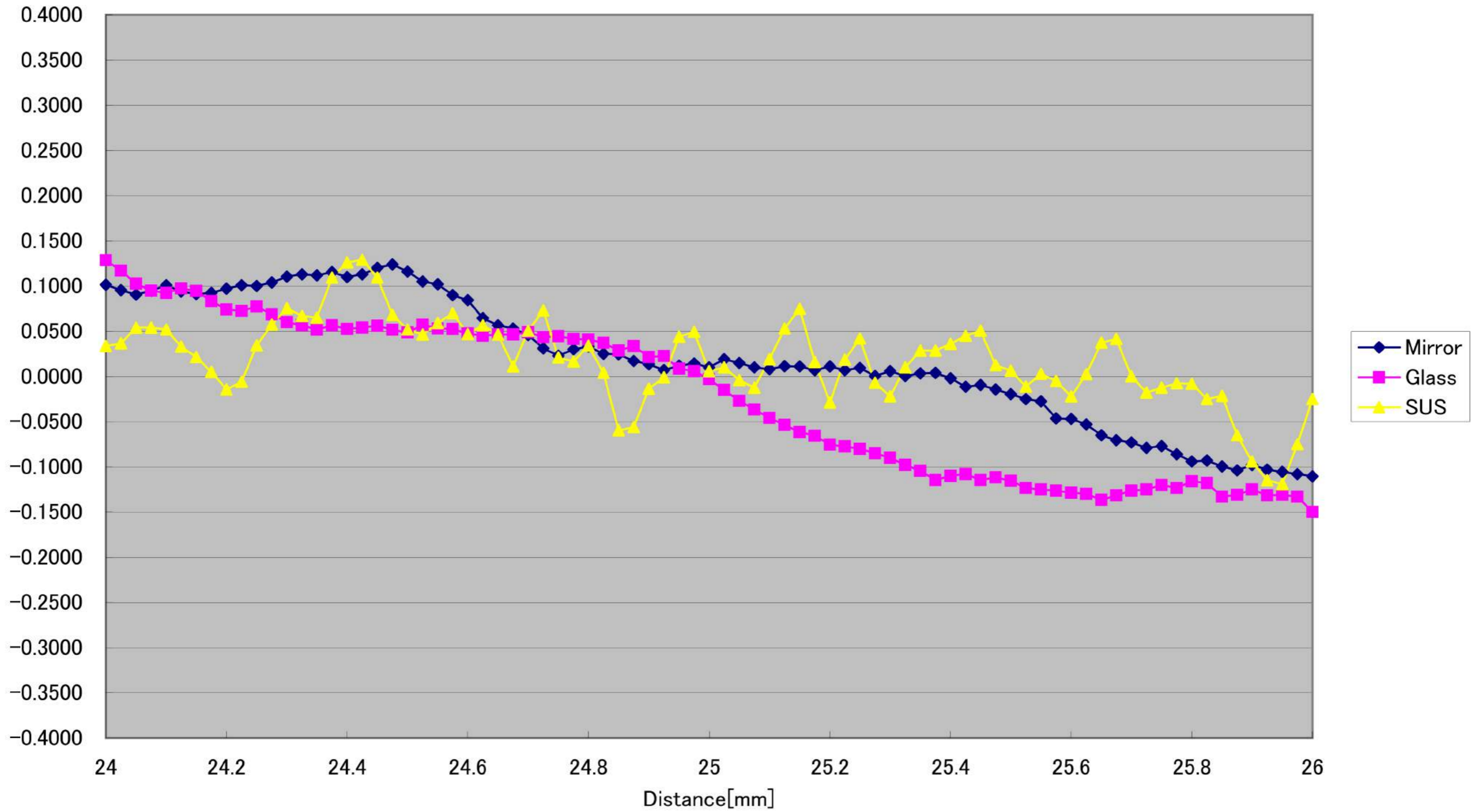
CD5-25-WIDE Linearity(Horizontal 0.2°)[%FS] (Typical)



CD5-25-WIDE Linearity(Vertical +0.2°)[%FS] (Typical)



CD5-25-WIDE Linearity(Vertical -0.2°)[%FS] (Typical)



CD5-25-WIDE Linearity($\pm 0^\circ$)[%FS] (Typical)

