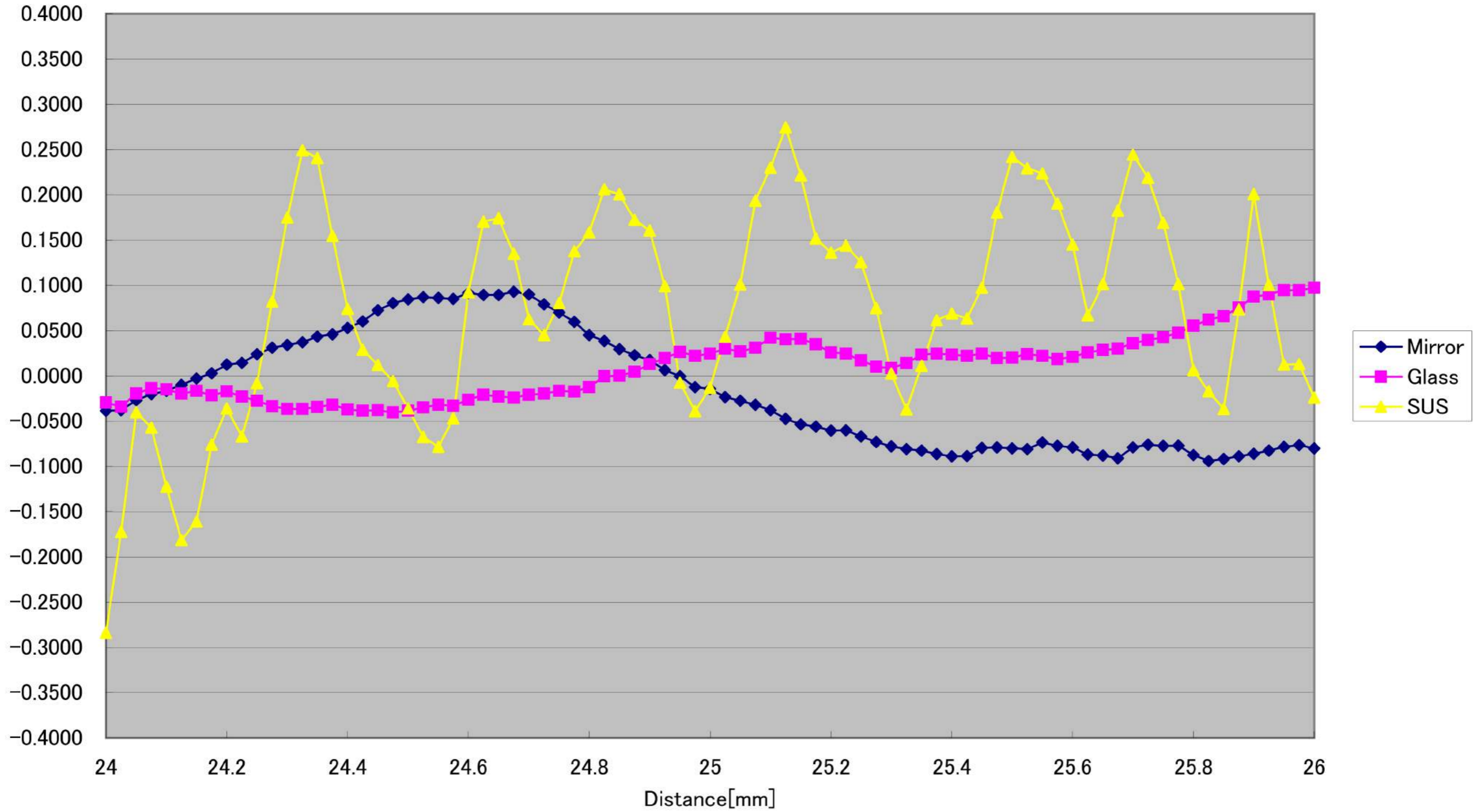
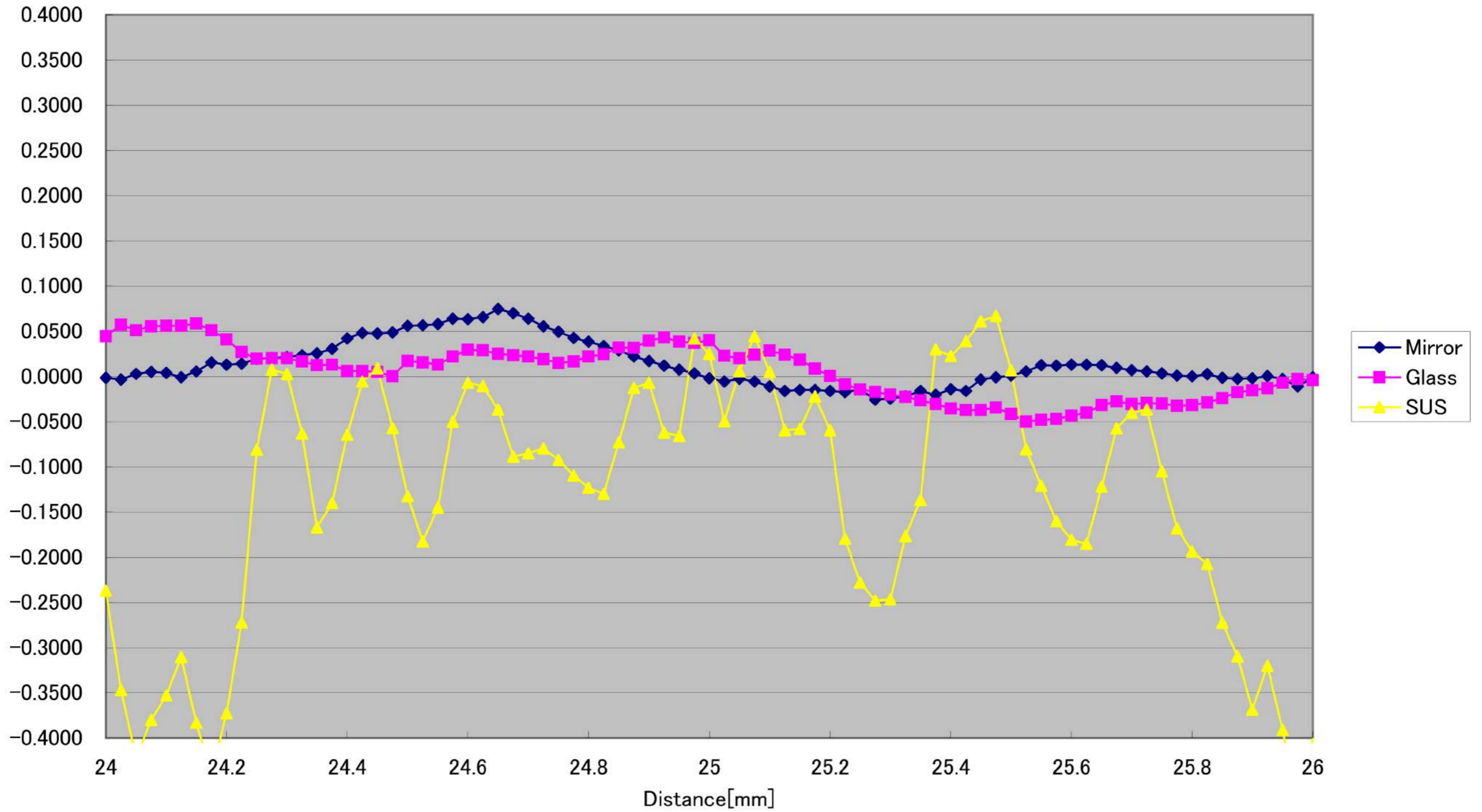


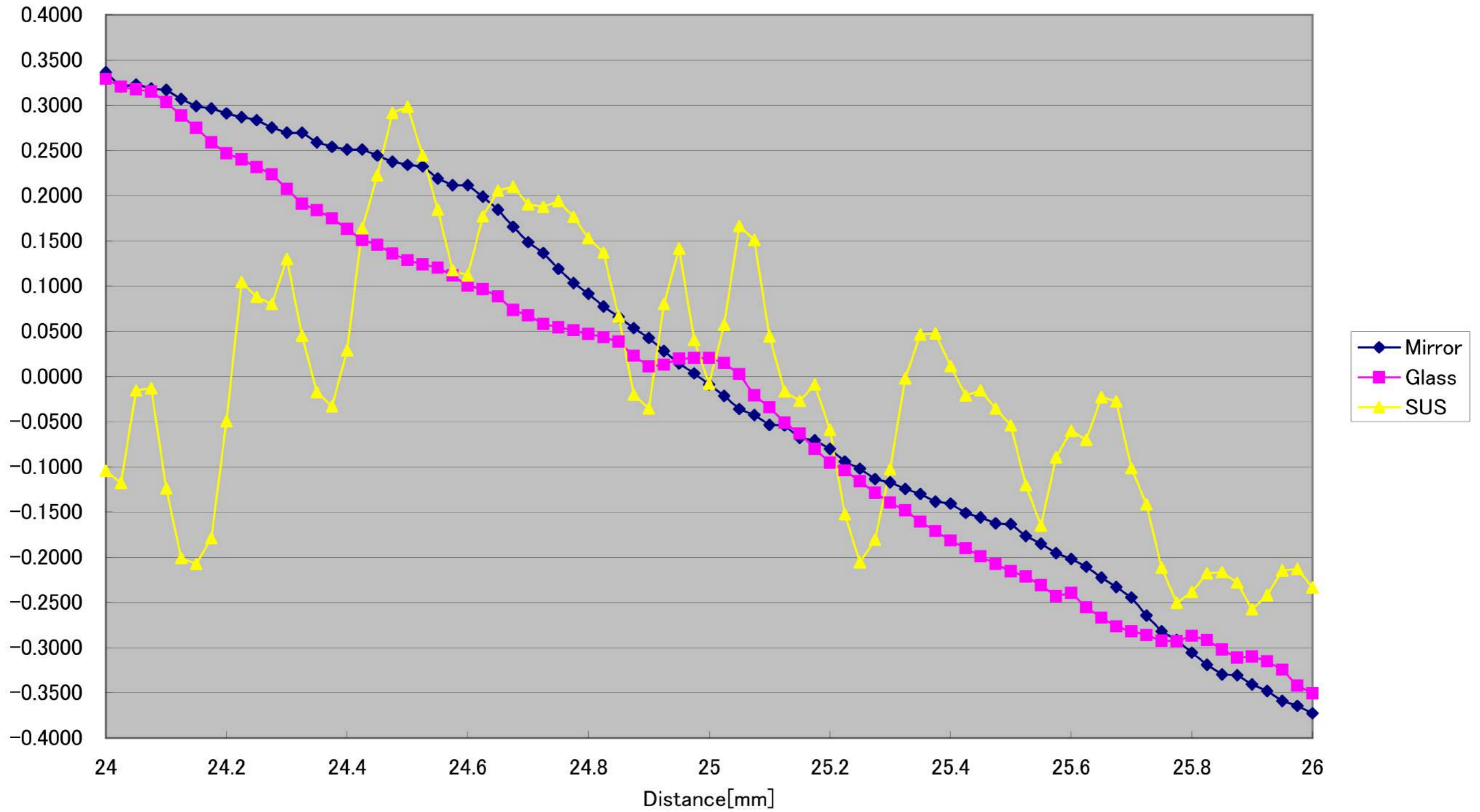
CD5-25-SPOT Linearity(Horizontal 0.2°)[%FS] (Typical)



CD5-25-SPOT Linearity($\pm 0^\circ$) [%FS] (Typical)



CD5-25-SPOT Linearity(Vertical -0.2°)[[%FS] (Typical)



CD5-25-SPOT Linearity(Vertical +0.2°)[%FS] (Typical)

