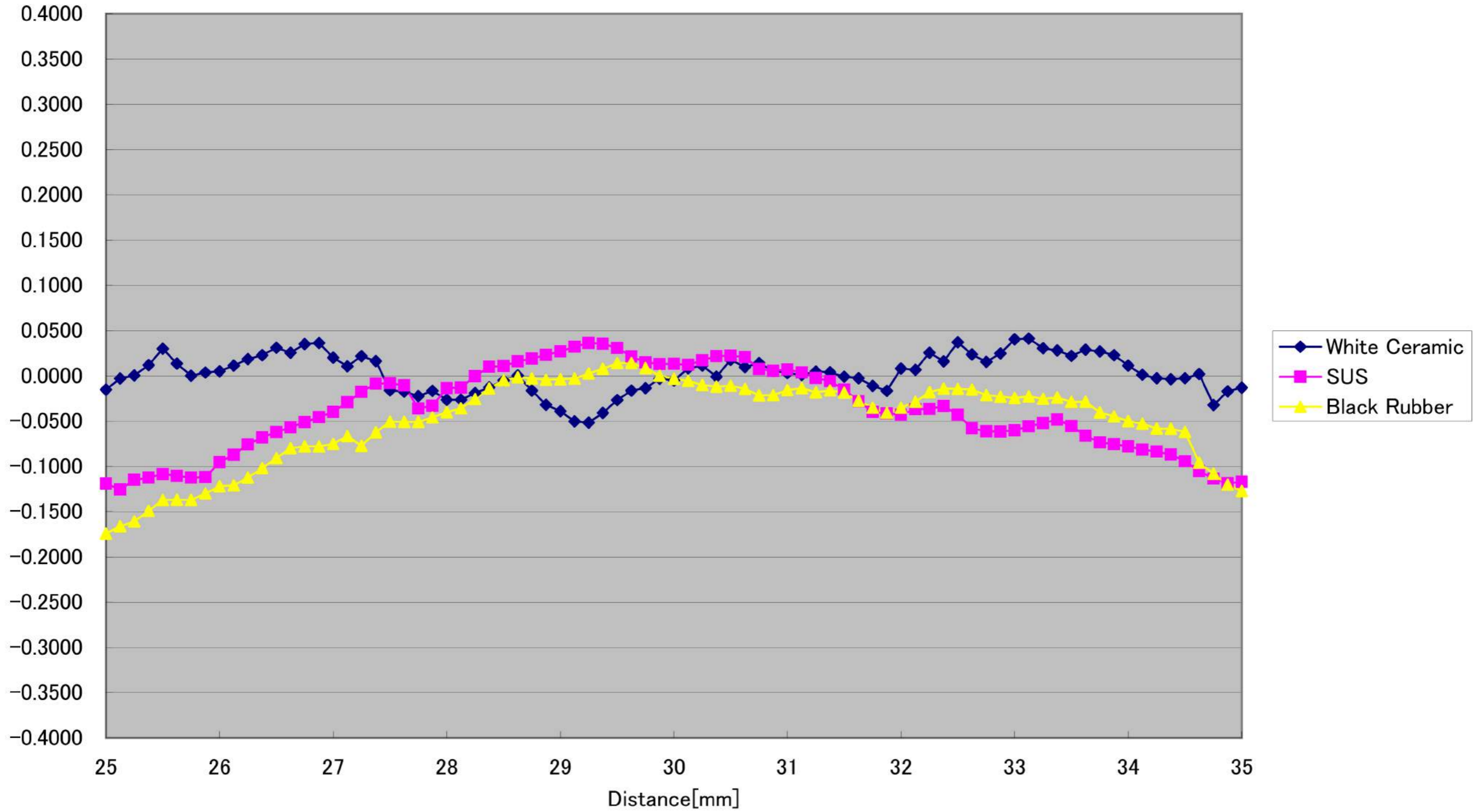
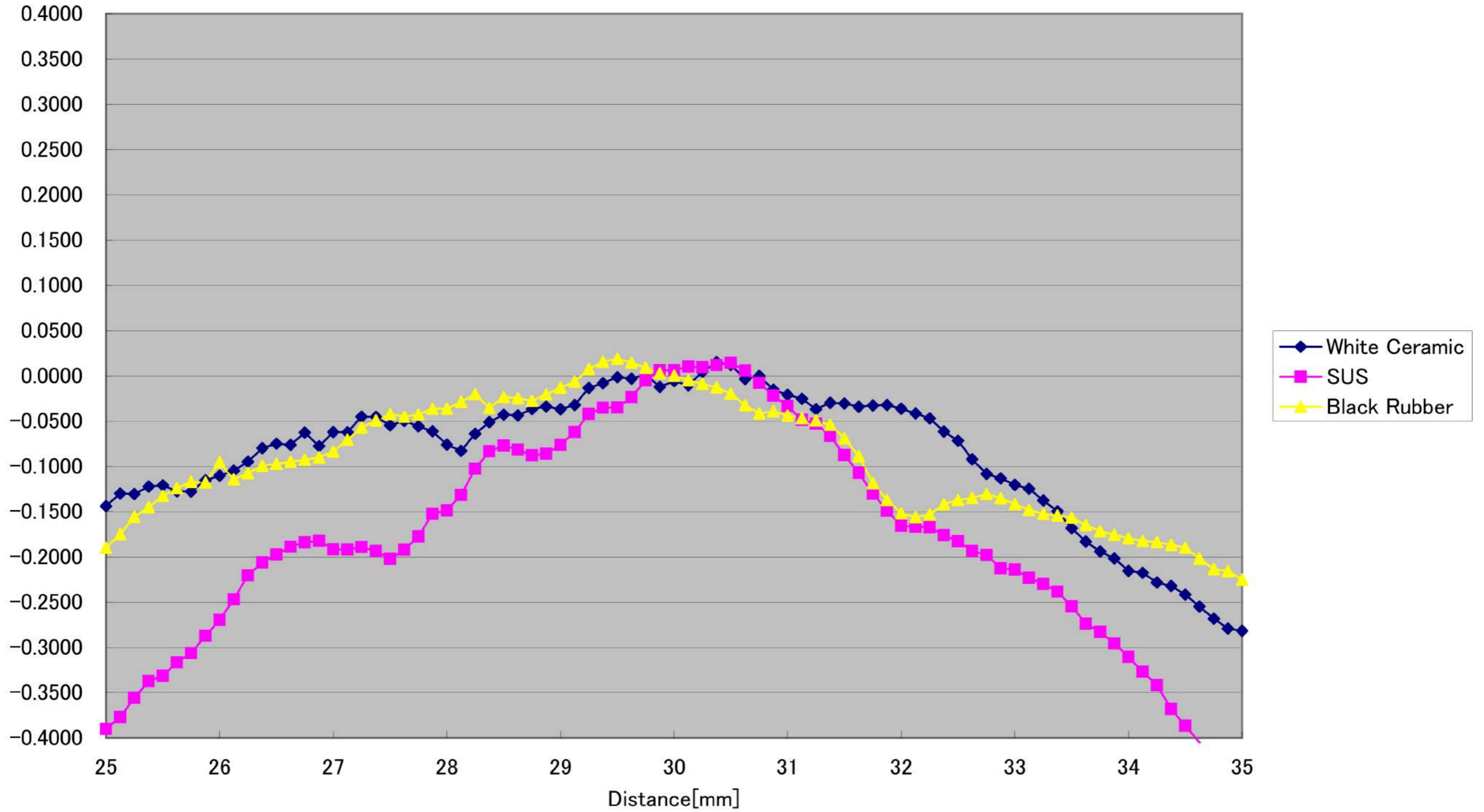


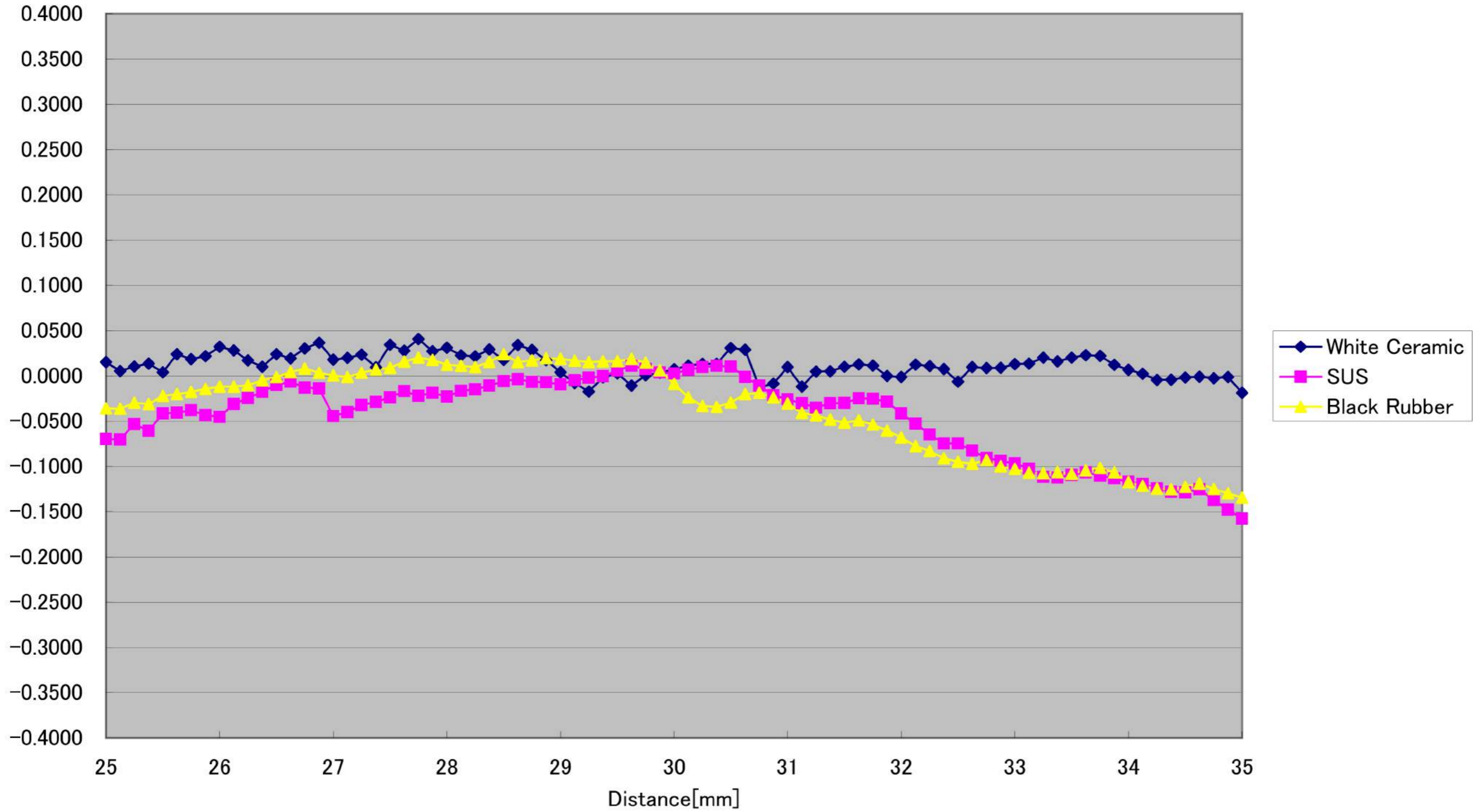
CD5-30-SPOT Linearity(Horizontal 10° )[%FS] (Typical)



CD5-30-SPOT Linearity(Vertical +10° )[%FS] (Typical)



CD5-30-SPOT Linearity(Vertical -10° )[%FS] (Typical)



CD5-30-SPOT Linearity( $\pm 0^\circ$ ) [%FS] (Typical)

