

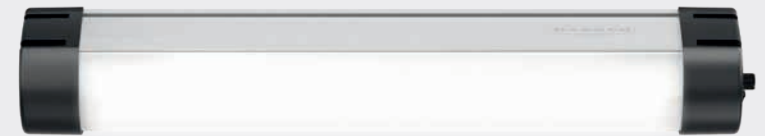
# Workstation Illumination



WLB32



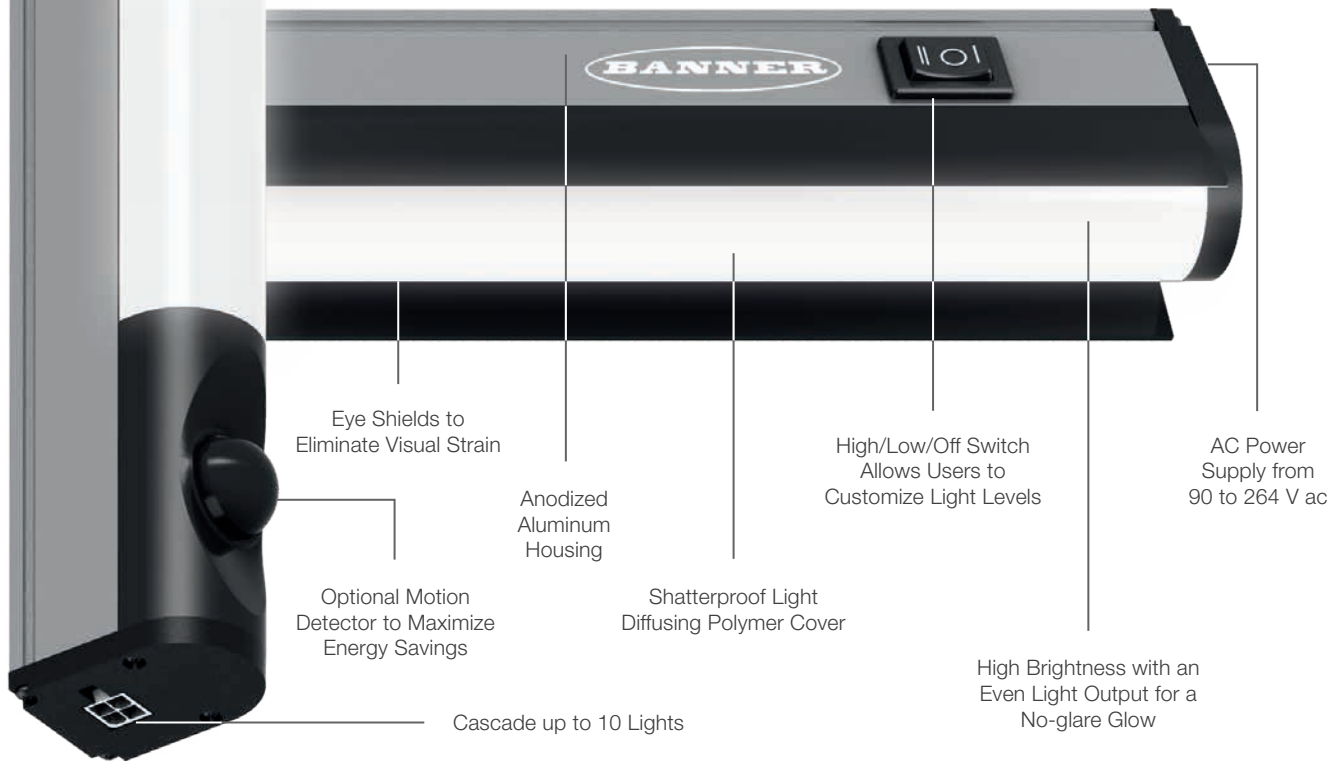
WLB92



more sensors, more solutions

# WLB32 Industrial LED Light Bar

High brightness for localized illumination



Eye Shields to Eliminate Visual Strain

Anodized Aluminum Housing

High/Low/Off Switch Allows Users to Customize Light Levels

AC Power Supply from 90 to 264 V ac

Optional Motion Detector to Maximize Energy Savings

Shatterproof Light Diffusing Polymer Cover

High Brightness with an Even Light Output for a No-glare Glow

Cascade up to 10 Lights

## WLB32 AC Models with Eye Shield and High/Low/Off Switch

Model	Length	Lumens
WLB32ZC285EPBQM	285 mm	650
WLB32ZC570EPBQM	570 mm	1300
WLB32ZC850EPBQM	850 mm	1950
WLB32ZC1130EPBQM	1130 mm	2600

## Lux Levels on a Typical Workstation

Length	Distance	Max Lux
3' / 850 mm	3' / 0.9 m	612
3' / 850 mm	5' / 1.5 m	246
4' / 1130 mm	3' / 0.9 m	634
4' / 1130 mm	5' / 1.5 m	315

Note: Light bar centered on a 48" x 30" / 1219 mm x 762 mm workstation



## AC Power Cordsets for WLB32 and WLB92, 6' (1.8 m) long For Use with Models Using QM Connector

LQMAC-306	Flying Leads
LQMAC-306B	North & Central America, Japan, Taiwan
LQMAC-306D	India, Sri Lanka, Nepal, Namibia
LQMAC-306EF	Mainland Europe, South-Korea
LQMAC-306G	UK, Ireland, Cyprus, Malta, Malaysia, Singapore, Hong Kong, Vietnam
LQMAC-306I	Australia, New Zealand, Papua New Guinea, Argentina, China
LQMAC-306N	Brazil and South Africa

## Surface, Swivel, Snap and Magnetic Brackets



LMBWLB32



LMBWLB32-180S



LMBWLB32MAG



LMBWLB32U



LMBWLB32UT

# WLB92 Industrial LED Light Bar

Brighter illumination at longer distances

## WLB92 AC Models with Quick Disconnect and Integral Dimming Knob

Model	Length	Lumens
WLB92ZC550PBQM	550 mm	3130
WLB92ZC1100PBQM	1100 mm	6500

USA only: AC models are DLC certified, have a five year warranty and are rebate eligible.

## Lux Levels on a Typical Workstation

Length	Distance	Max Lux
2' / 550 mm	5' / 1.5 m	455
2' / 550 mm	7' / 2.1 m	235
4' / 1100 mm	5' / 1.5 m	881
4' / 1100 mm	7' / 2.1 m	468

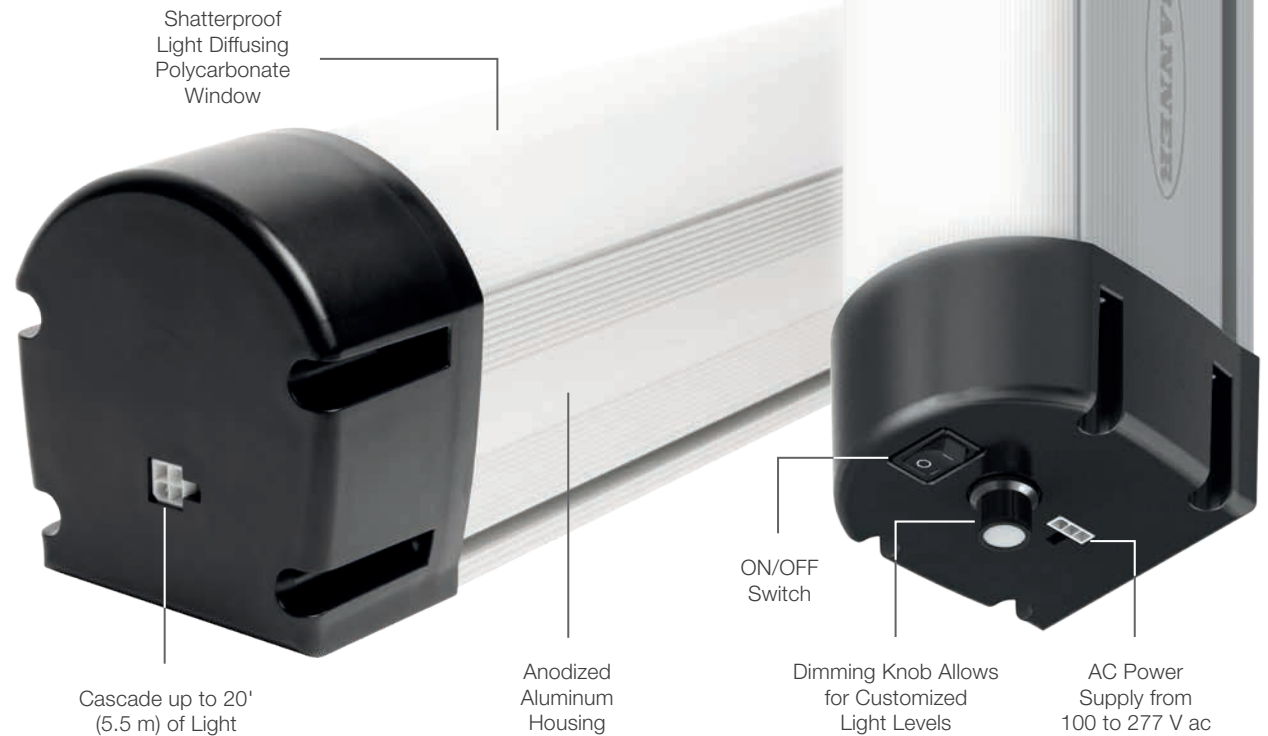
Note: Light bar centered on a 48" x 30" / 1219 mm x 762 mm workstation



## Double-Ended Cascading Cordsets Male Straight/Male Straight Connectors

LQMAEC-3005SS	0.5' / 0.15 m
LQMAEC-301SS	1.0' / 0.31 m
LQMAEC-303SS	3.0' / 0.91 m
LQMAEC-306SS	6.0' / 1.83 m
LQMAEC-312SS	12.0' / 3.66 m
LQMAEC-320SS	20.0' / 6.10 m

DC models also available



## Surface, Swivel, Snap and Hanging Brackets



LMBWLB92

LMBWLB92-CLIP

LMBWLB92S

LMBWLB92RAS

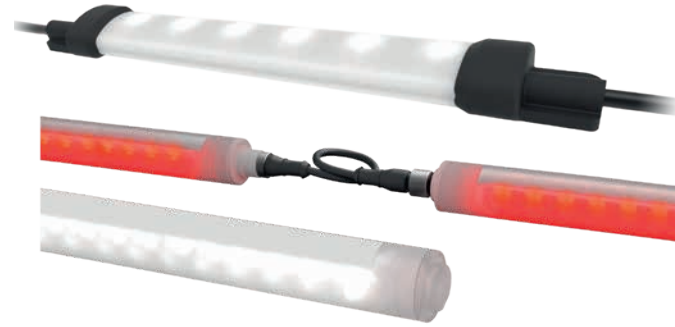
LMBWLB92HK5

## WL50-2 LED Work Lights



- Bright, focused light
- Low power consumption
- Flex arm in different lengths and mounting styles
- Integral ON/OFF switch
- Magnetic mounting

## WLS15 & WLS27 LED Strip Lights



- Easy mounting with various bracket options
- Sealed and ruggedized for industrial applications
- Low-Profile WLS15 fits under shelves and above parts bins
- WLS27 EZ-STATUS multicolor models provide illumination plus indication

## Tower Lights



- Colored LEDs behind translucent windows eliminate false indication
- 50 mm preassembled IP67 units
- 70 mm modular units
- High brightness, daylight visible and audible alarm options
- Optional wireless technology simplifies installation and adds remote monitoring and control capabilities

## Illuminated Touch Buttons



- Simple operation with the touch of a finger, hand or palm
- Easily actuated with bare hands or gloves
- Up to three colors in a single unit with a variety of logic and I/O configurations
- Wireless models simplify installation and provide mobility



more sensors, more solutions