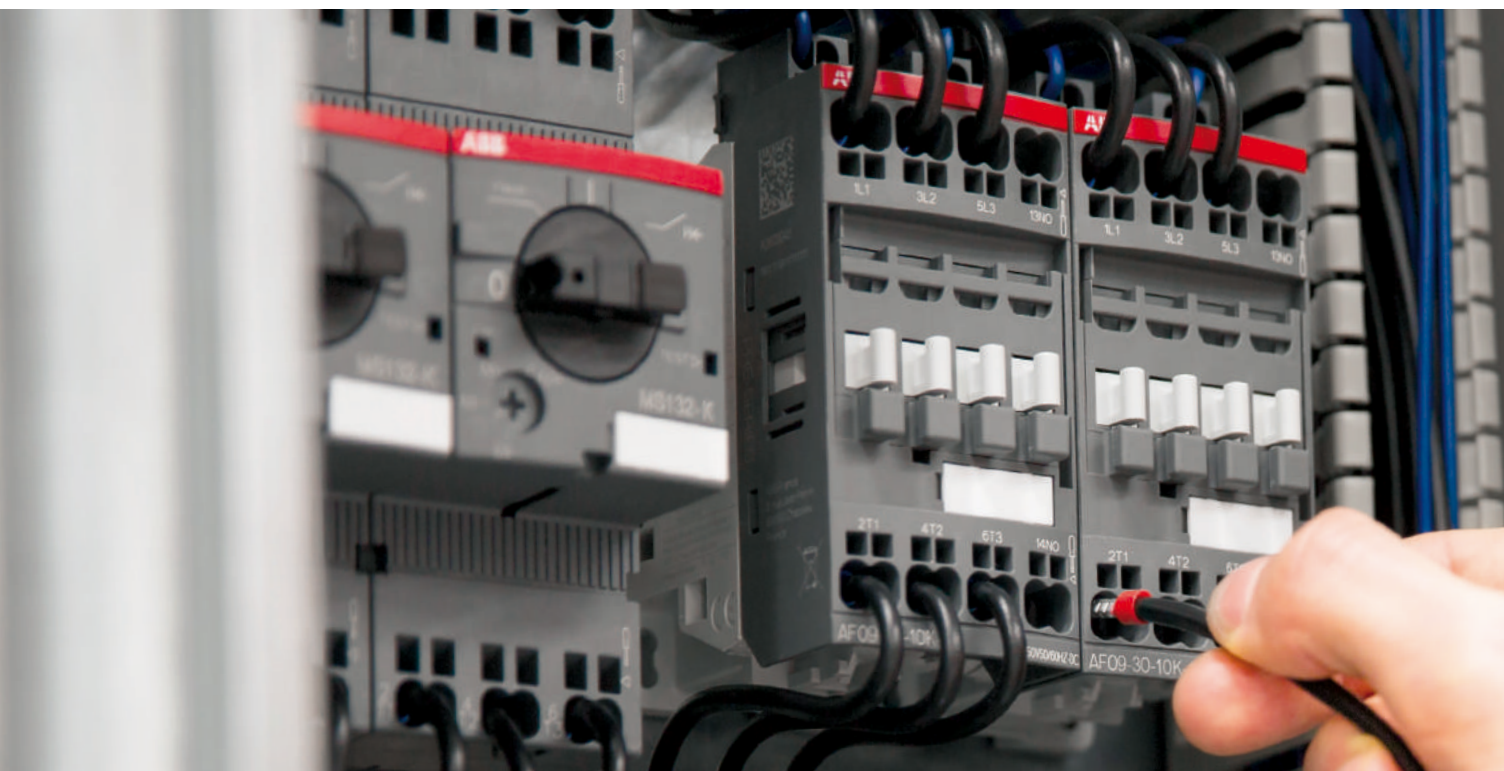


Just push it

Push-in Spring motor starting solution



With the new Push-in Spring motor starting solution, one push is all you need for extremely fast wiring. No tool is required, so you can save up to 50% wiring time with Push-in Spring compared to conventional spring solutions. And the connections are just as reliable. So for speed, ease and reliability, just push it.



Speed up your projects

Faster than ever installation

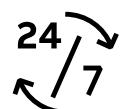
Imagine a motor starting solution that's twice as fast to install. With Push-in Spring, you no longer need to imagine – it's a reality. Push-in mode allows you to insert both ferruled and rigid cables without the need to use any tools, boosting your productivity like never before.



Easy to install

Easier than ever wiring

Push-in Spring technology opens up new possibilities. With its unmatched ease of use, wiring becomes far more intuitive. This eliminates the need for special training and reduces the chance of wiring error. What possibilities will it open up for you?



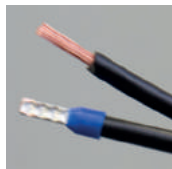
Continuous operation

Reliable as ever connections

The speed and ease of Push-in Spring comes with the added reassurance of connections that are as reliable as ever. This gives you complete peace of mind when using the Push-in Spring motor starting solution.

Push-in Spring motor starting solution

Complete range, complete efficiency



2-in-1

Benefit from both Push-in mode and Spring mode and use ferruled cables or cables without ferrules in the same terminal.



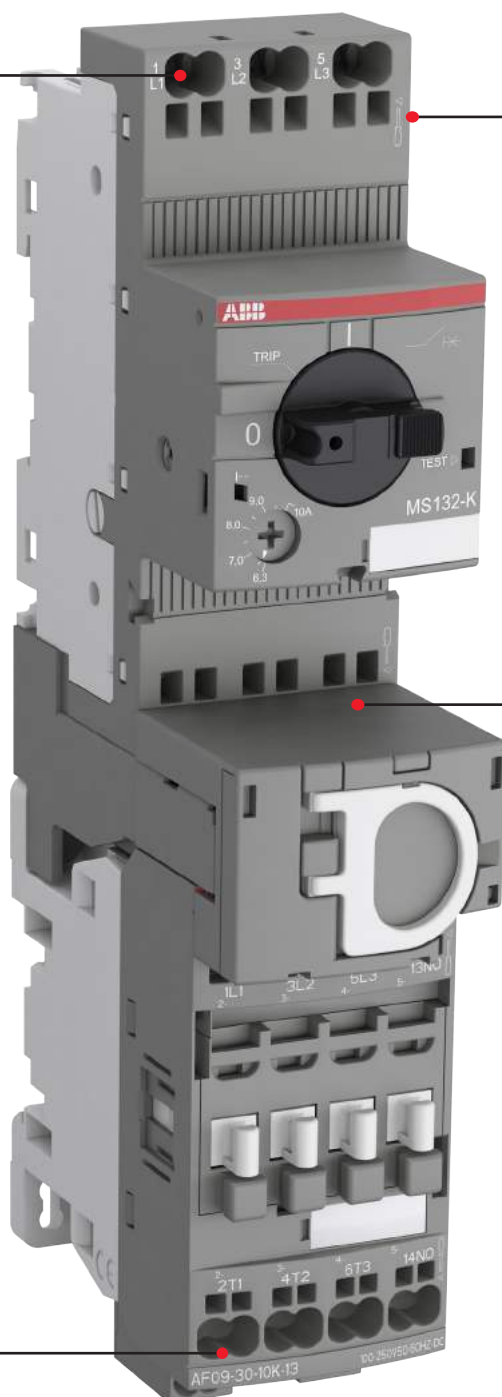
Compatible with screw range

Mount accessories for control circuits on the screw range up to 30 kW AC-3 400 V on manual motor starters and up to 45 kW AC-3 400 V, 130 A AC-1 on contactors.



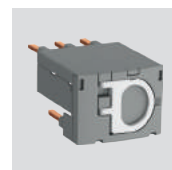
Robust by design

Contact robustness by design, independent from operator.



Just one tool for everything

You only need a 3 mm screwdriver in Spring mode as well as for de-wiring the complete solution.



Tool-less connecting links

100% tool-less mounting and dismounting connecting links.



Higher connecting capacity

The solution ranges up to 18.5 kW 400 V AC-3 and 50 A AC-1 (25 hp 480 V and 45 A 600 V general use).

ABB France
Electrification Products Division
Low Voltage Products and Systems
3, rue Jean Perrin
F-69680 Chassieu
France

ABB STOTZ-KONTAKT GmbH
Electrification Products Division
Low Voltage Products and Systems
Eppelheimer Straße 82
D-69123 Heidelberg,
Germany

You can find the address of your local sales organization on the ABB homepage

abb.com/lowvoltage

Copyright© 2018 ABB - All rights reserved

